

—

Når du ikkje ser
vegen for berre
rot, er det likevel
håp

**Vegar til betre samlingsforvaltning.
Prioritering og omorganisering**





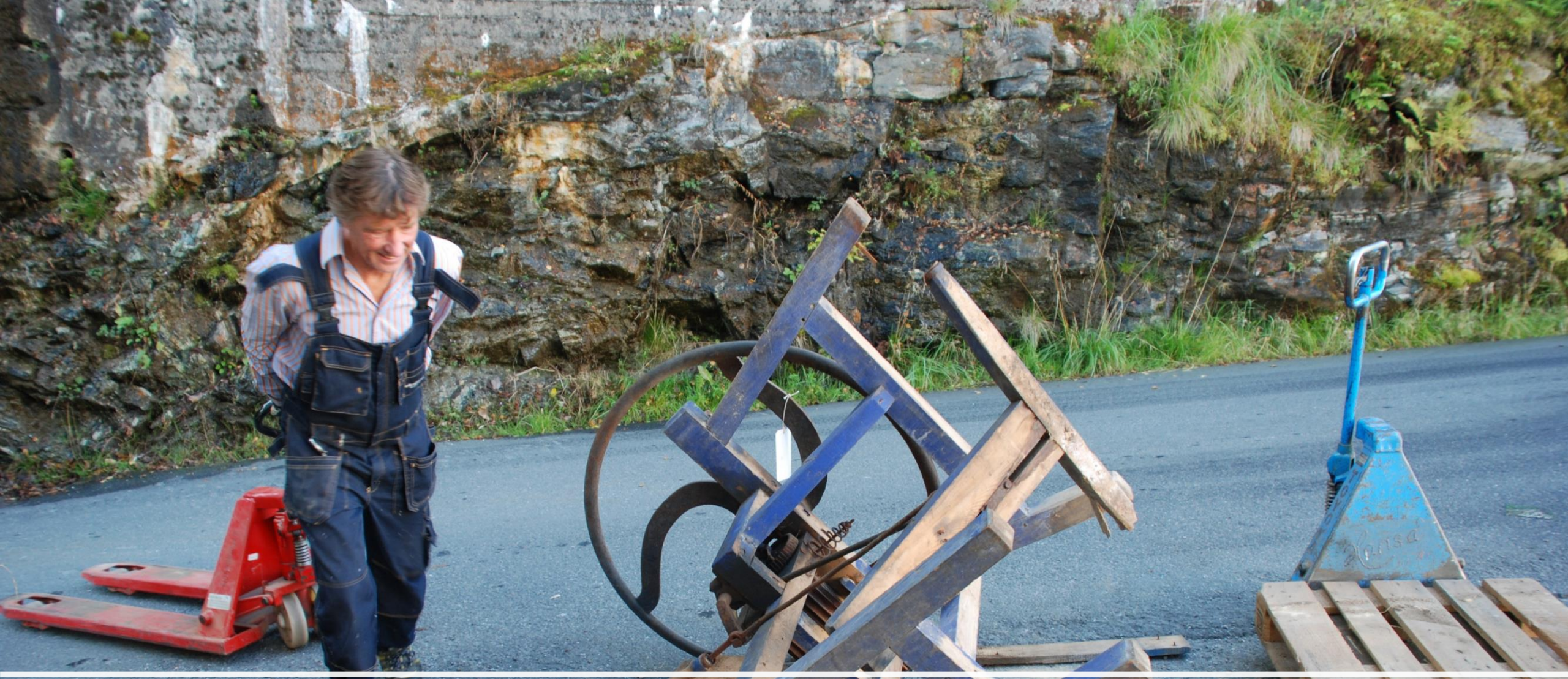
Kva må til for å orke det tilsynelatande umoglege?





Korleis finne vegen ut av uføret?

1. Erkjenne at ein har gått seg vill
2. Stikke ut kurs
3. Unngå overvekt!
4. Våge å ta steget



Samarbeid med andre avdelingar



Midlar til flytting

Prioritizing



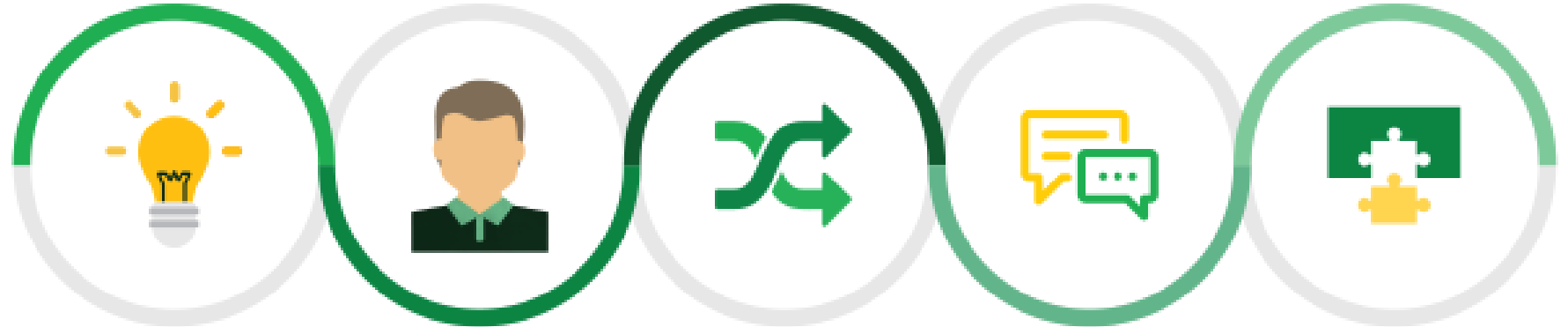


Ledig areal??? Forankring i organisasjonen

Kursen er stikka ut, målet er definert. Korleis når ein det?



RE-ORG is a **step-by-step** method for **planning and implementing** a storage reorganization project.



RE-ORG

focuses on the creative and safe use of existing resources

is user friendly

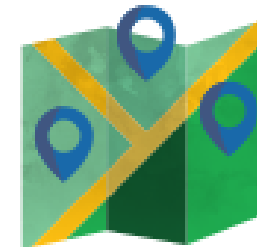
is adaptable to diverse collections and contexts

boosts communication and teamwork

offers systematic, efficient and cost-effective solutions



Initially developed in 2011 by ICCROM and UNESCO, RE-ORG has been revised and reformatted in collaboration with the Canadian Conservation Institute (CCI).



The Method has been applied successfully by 83 museums in 27 countries and on 5 continents.

The 4 interconnected aspects of a reorganization

MANAGEMENT



BUILDING



COLLECTIONS



FURNITURE &
EQUIPMENT



The 4 phases of **+**RE-ORG

Phase 1

**Creation
of a team**



Phase 2

**Study of
the store
room**



Phase 3

**Planning of
the project**



Phase 4

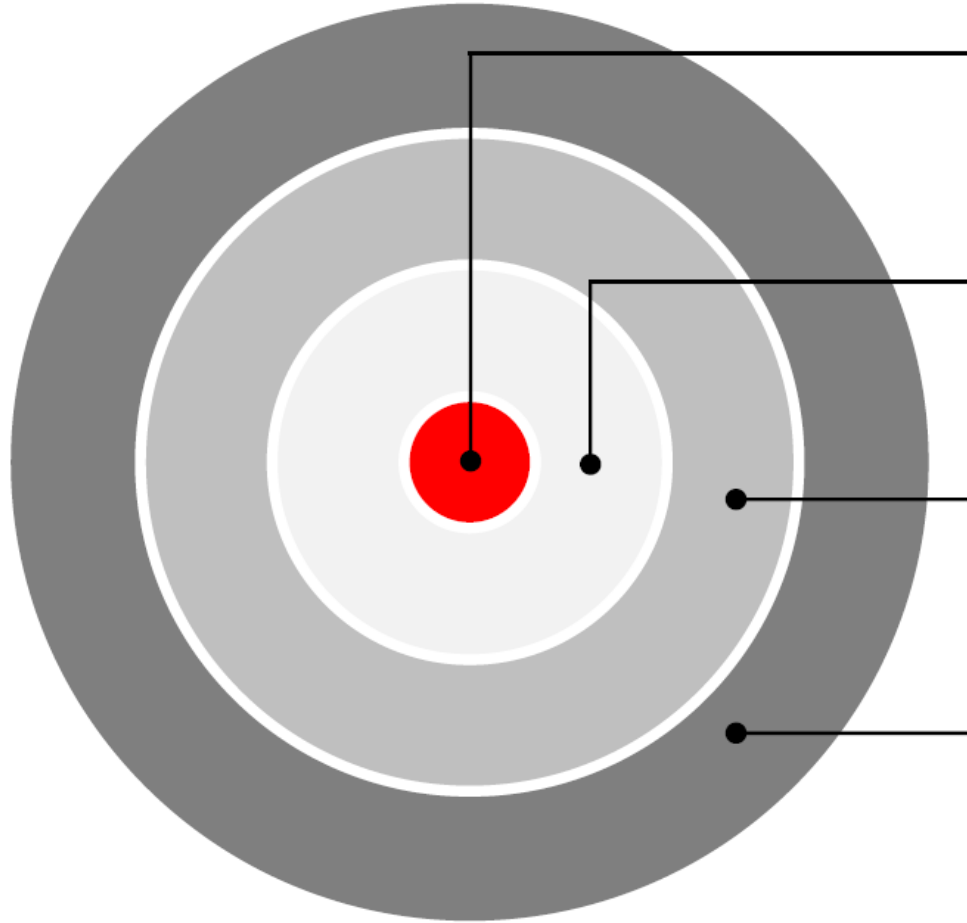
**Execution
of the
project**



CRITERIA OF A PROFESSIONAL STORAGE

1. One qualified member of staff is in charge
2. The storage rooms contain **only collection objects**
3. Separate spaces are dedicated to **support functions**: office, workroom, storage of equipment and other materials
4. No object is placed directly **on the floor**
5. Every object has a **designated location** in storage and can be located within three minutes
6. Every object **can be accessed** without moving more than two others
7. Objects are arranged **by category**
8. Key **policies and procedures** exist and are applied
9. The building and storage rooms offer **adequate protection** for the collection
10. Every object is **free from active deterioration** and is **ready to be used** for the museum's activities

At this stage, the storage department of the museum follows only **the criteria #1** of a professional storage according to the ICCROM/UNESCO RE-ORG methodology



Collection

Gather quantitative and qualitative data about your collection that influence many decisions you make about space and equipment needs

Furniture & Small Equipment

Evaluate the storage furniture and equipment you have, and determine what you might need to work more efficiently with your collection

Building & Space

Examine how your building could be putting your collection at risk, and calculate how well you are using the space you have

Management

Take a closer look at your policies and procedures in relation to roles and responsibilities of staff

Kva kan ein
oppnå?



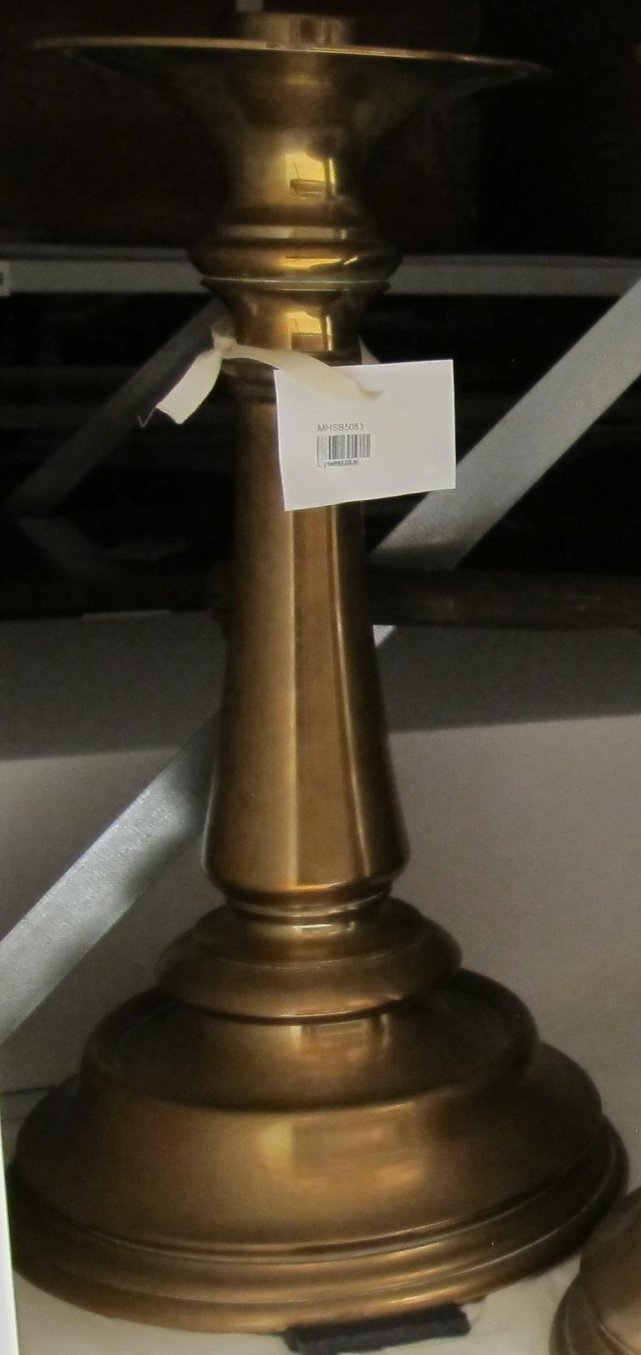
Betre plass og meir oversikt



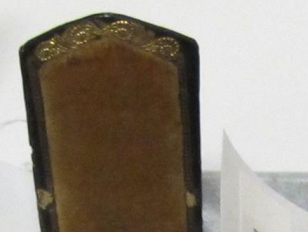
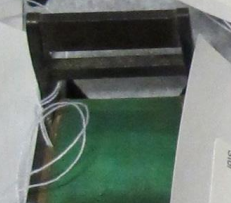
FØR



ETTER







GB11990d-2
Dyne

GB11990d-1
Laken

GB11990d-1
Laken

GB11990d-1
Laken

GB11990d-1
Laken

GB11998c
Stol

GB11998b
Stol

GB10257b
Stol

GB10257a
Stol

GB12001e
Stol

GB12001d
Stol

GB12001c
Stol

GB12001b
Stol

GB12001a
Stol

GB11990d-1
Laken

GB11990d-1
Laken

GB10278
Stol

GB12068
Stol

GB12065
Matador

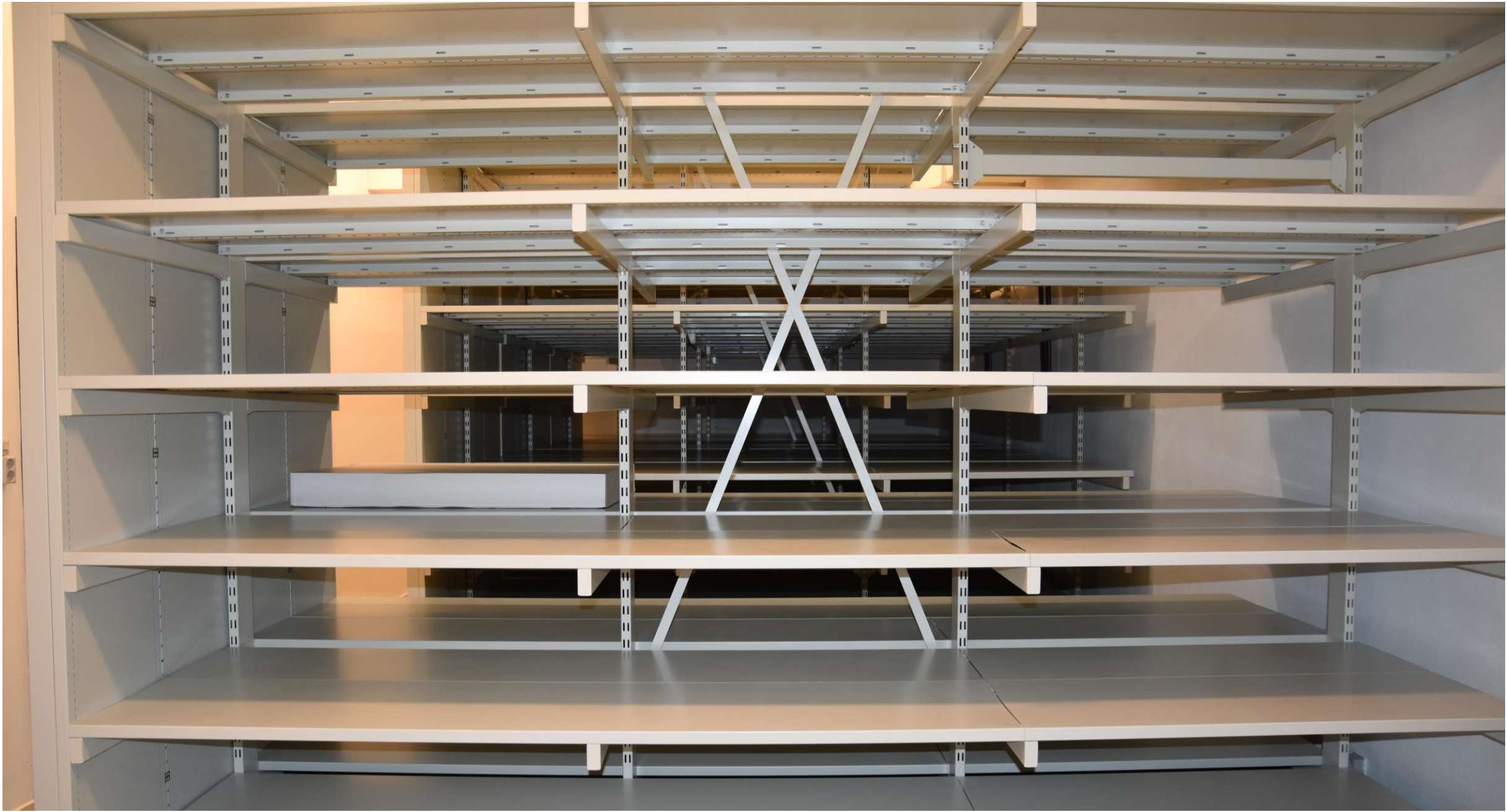
GB12062
Stol

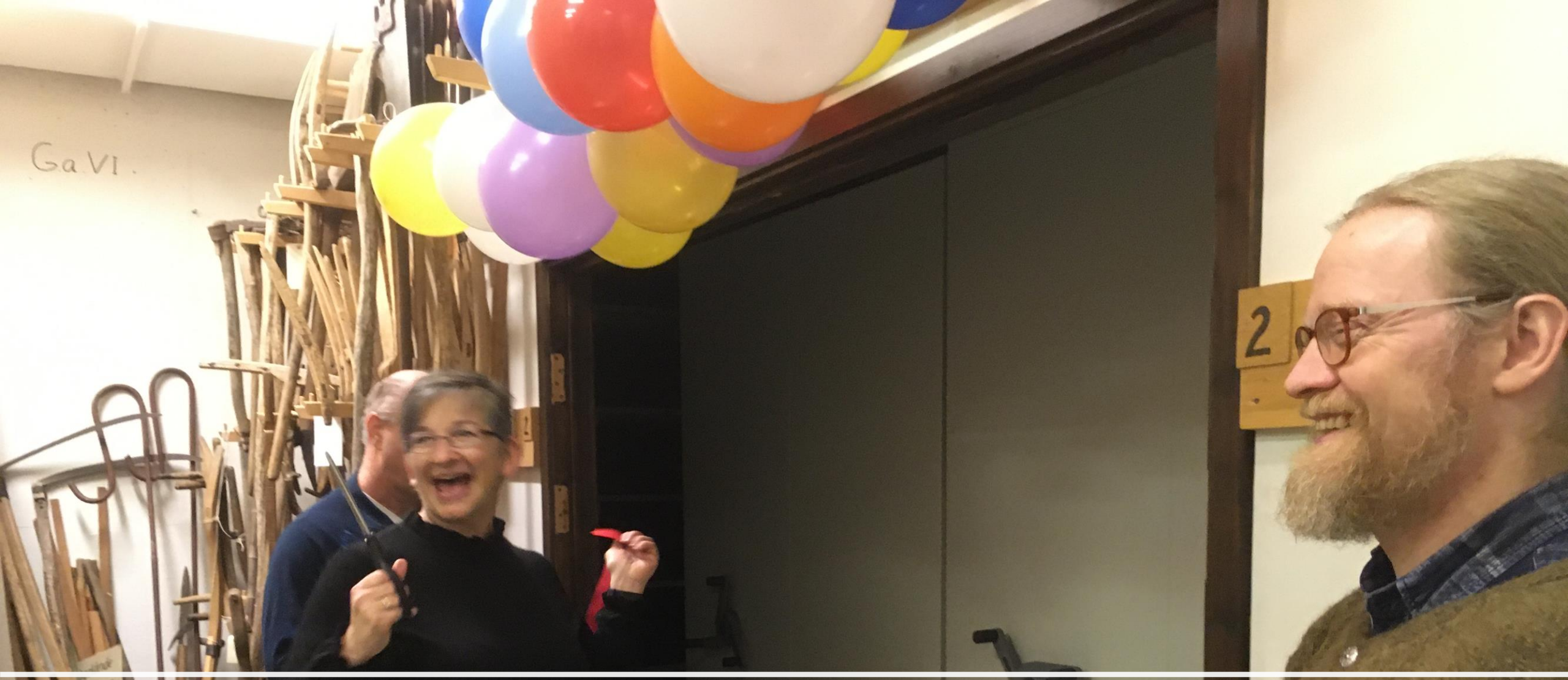
GB12061
Stol

GB12060
Stol

GB12059
Stol

GB12058
Stol





Målet er nådd. Vi kom heilskinna fram.

